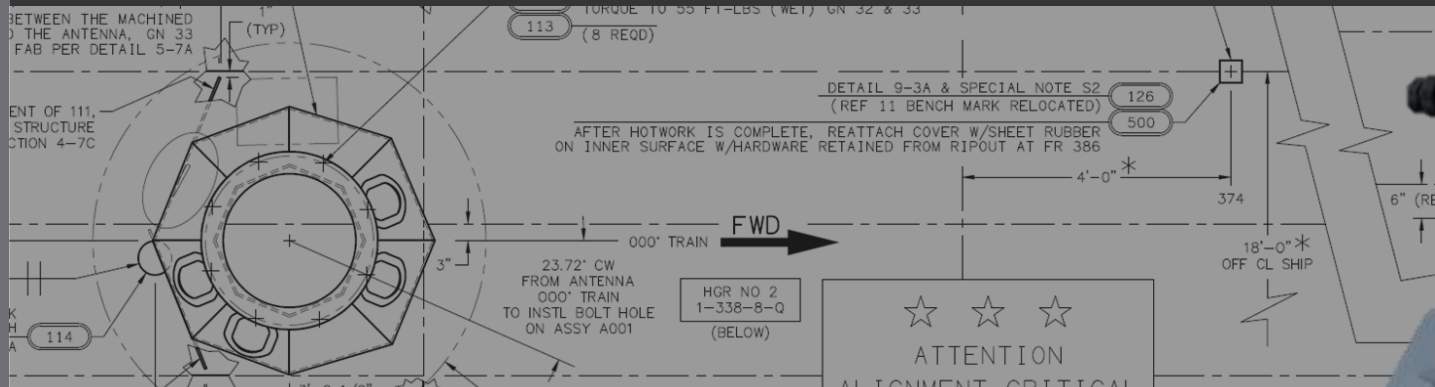


# COMBAT/CRITICAL ALIGNMENT SERVICES



**AFLOAT: DDG, LPD, LHD, CVN (68 & 78 CLASS) & USCG WMSL**  
**ASHORE: DAM NECK NAVAL BASE and WALLOPS ISLAND**

- Roller Path Inclination (RPI)
- AN/SPQ-9B
- AN/USG-2/2A (CEC)
- AS-3240A TACAN
- MK 31 RAM
- MK 57 NSSMS
- AS-4710/U HGIO Antenna
- AS-4708 Hemispherical Broadband
- Pelorus
- Optical Dazzling Interdictor Navy (ODIN) Laser System
- Benchmark (Installation & Relocation)
- Alignment Critical Foundation
- SSDS Lever Arm
- Ships Reference Planes (WCRP & SCP)
- Proper Hull Offsets
- Alignment of Critical Hull Fittings
- Pre-Machining
- King Posts & Booms
- Fueling at Sea Fittings

**PRISM MARITIME**



**SCAN ME**

**Matt Shephard**  
*Department Lead  
Representative*



**SCAN ME**

**Gregg Krueger**  
*Prism Maritime  
Business Manager*

**PRISM OXNARD Location**

2259 Portola Rd. Suite A  
Ventura, CA 93003

**PRISM (Headquarters)**

1416 Kelland Drive  
Chesapeake, VA 23320

**PRISM San Diego Location**

8835 Balboa Ave., Suite A San  
Diego, CA 92123

# COMBAT/CRITICAL ALIGNMENT SERVICES



## Prism's Combat System Alignment Program

Prism has experienced and certified Senior Level TQS Certified Alignment Technicians qualified through NSWC/PHD 12933-16U001-A73, Training and Qualification Standards for Shipboard Combat System Alignment Engineers and Technicians (TQS Program administered by NSWC PHD/CSA ISEA), and in accordance with NAVSEA Technical Manual SW225-A0-MMA-010/Alignment Theory and all ship class Combat System Alignment Manuals (CSAMs).

---



[www.prismmaritime.com](http://www.prismmaritime.com)